

Keep this
manual onboard!



User Manual

Including Installation For Tunnel Cut Out Tool
6 8870, 6 8871



SLEIPNER AS

P.O. Box 519

N-1612 Fredrikstad

Norway

www.sleipnergroup.com

DOCUMENT ID: 4504

REVISION: 3

DATE: 2021

LANGUAGE: EN



To download your language go to www.sleipnergroup.com

Cut out tool overview.....	3
Assembling the cut out tool	4 - 5
Cutting the tunnel hole.....	6
Service and Support.....	7
Product Spare Parts and Additional Resources.....	7
Warranty statement	7
Patents.....	7

Products

6 8870 - Tunnel cut out tool for installation of GRP
6 8871 - Installation tool SP US w/o gr

It is the installers responsibility

When installing Sleipner equipment follow the outlined regulations/ classification rules (electrical/ mechanical) according to international or special national regulations. Instructions in this guide cannot be guaranteed to comply with global electric/ mechanic regulations/ classification rules.

Follow all health and safety laws in accordance with their local outlined regulations/ classification rules.

Before installation, it is important that the installer reads this guide to ensure necessary acquaintance with the product.

The recommendations made in this manual are guidelines ONLY, and Sleipner Motor AS (Sleipner) strongly recommend that before installation, advice is obtained from a naval architect familiar with the particular vessel and regulations/ classifications.

This manual is intended to support educated/ experienced staff and is therefore not sufficient in all details for professional installation. *(NB: These instructions are only general instruction. If you are not skilled to do this work, please contact professional installers for assistance.)*

All electrical work must be done by a licensed professional.

Faulty installation of Sleipner products will render all warranty given by Sleipner Motor AS void.

MC_0038

DECLARATION OF CONFORMITY

MC_0020

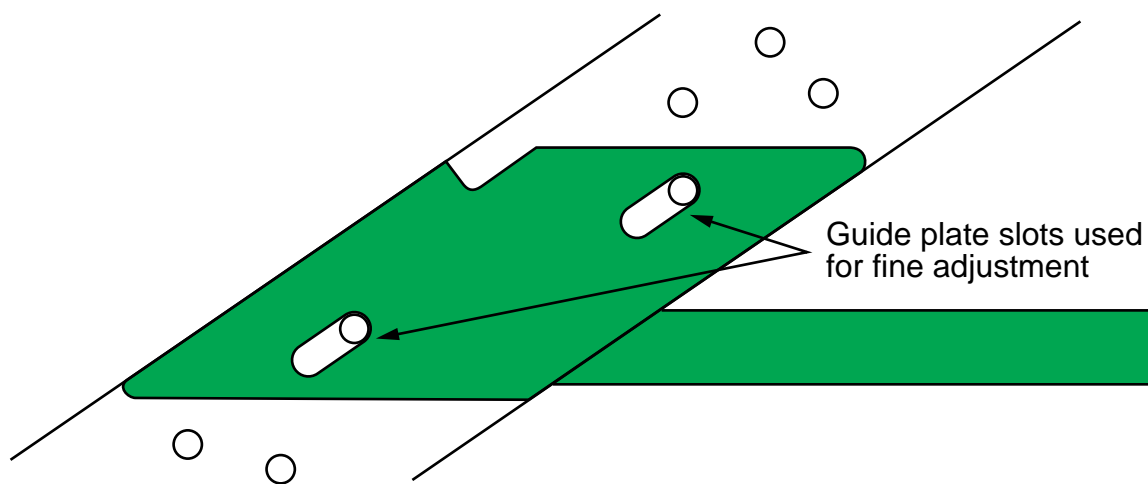
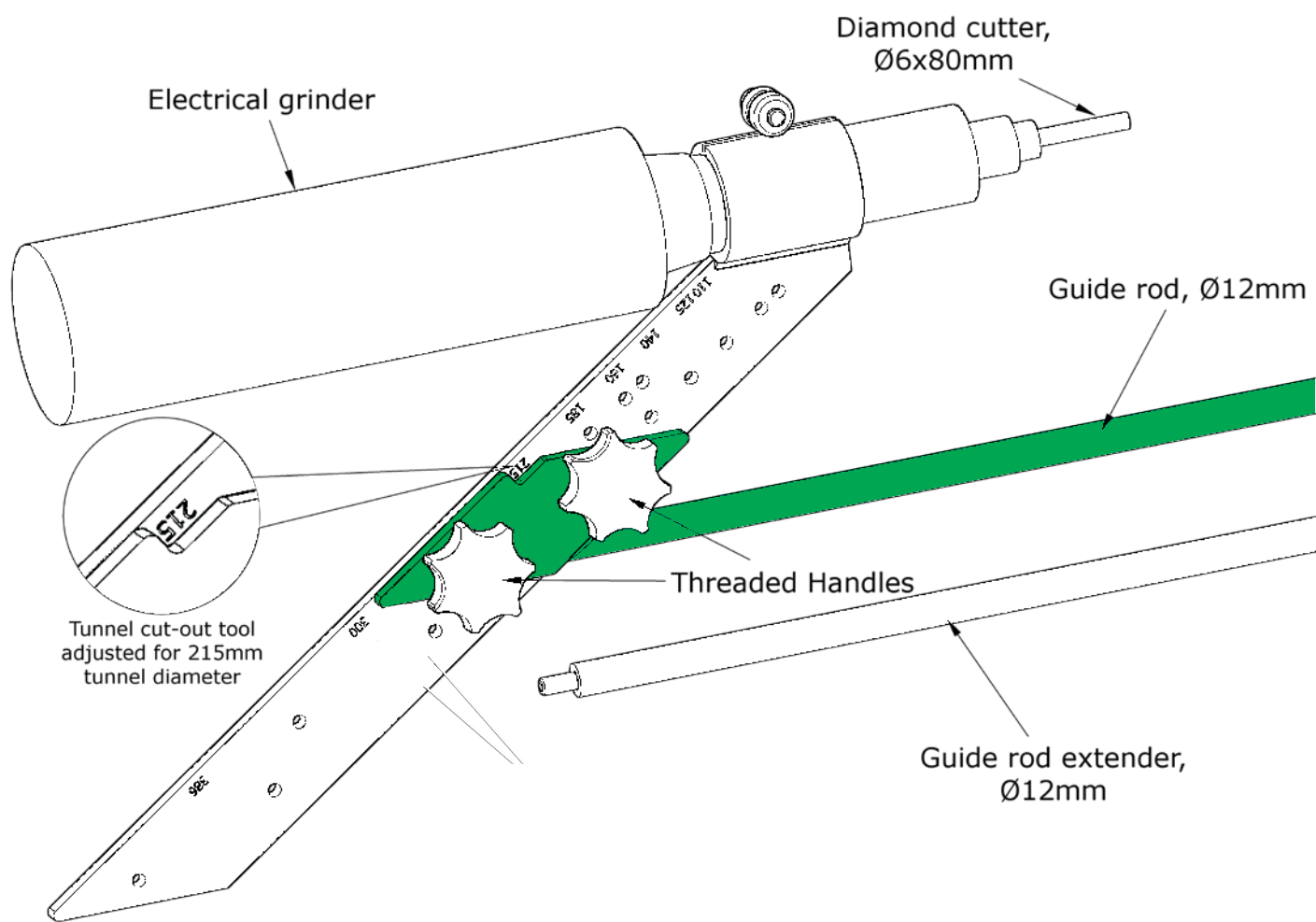


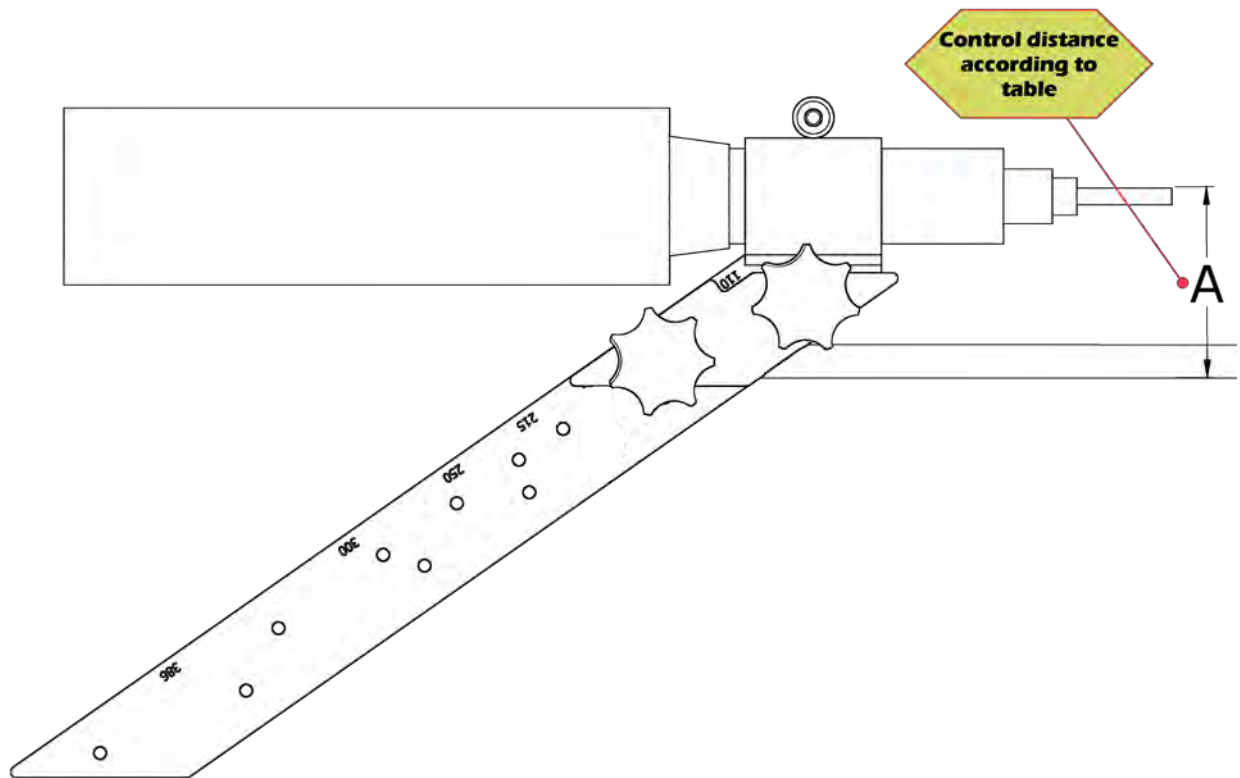
Sleipner Motor AS
P.O. Box 519, Arne Svendsensgt. 6-8
N-1612 Fredrikstad, Norway

Declare that this product with accompanying standard control systems complies with the essential health and safety requirements according to:

DIRECTIVE 2013/53/EU
DIRECTIVE 2014/30/EU
DIRECTIVE 2014/35/EU

Cut Out Tool Overview





MG_0431

EN

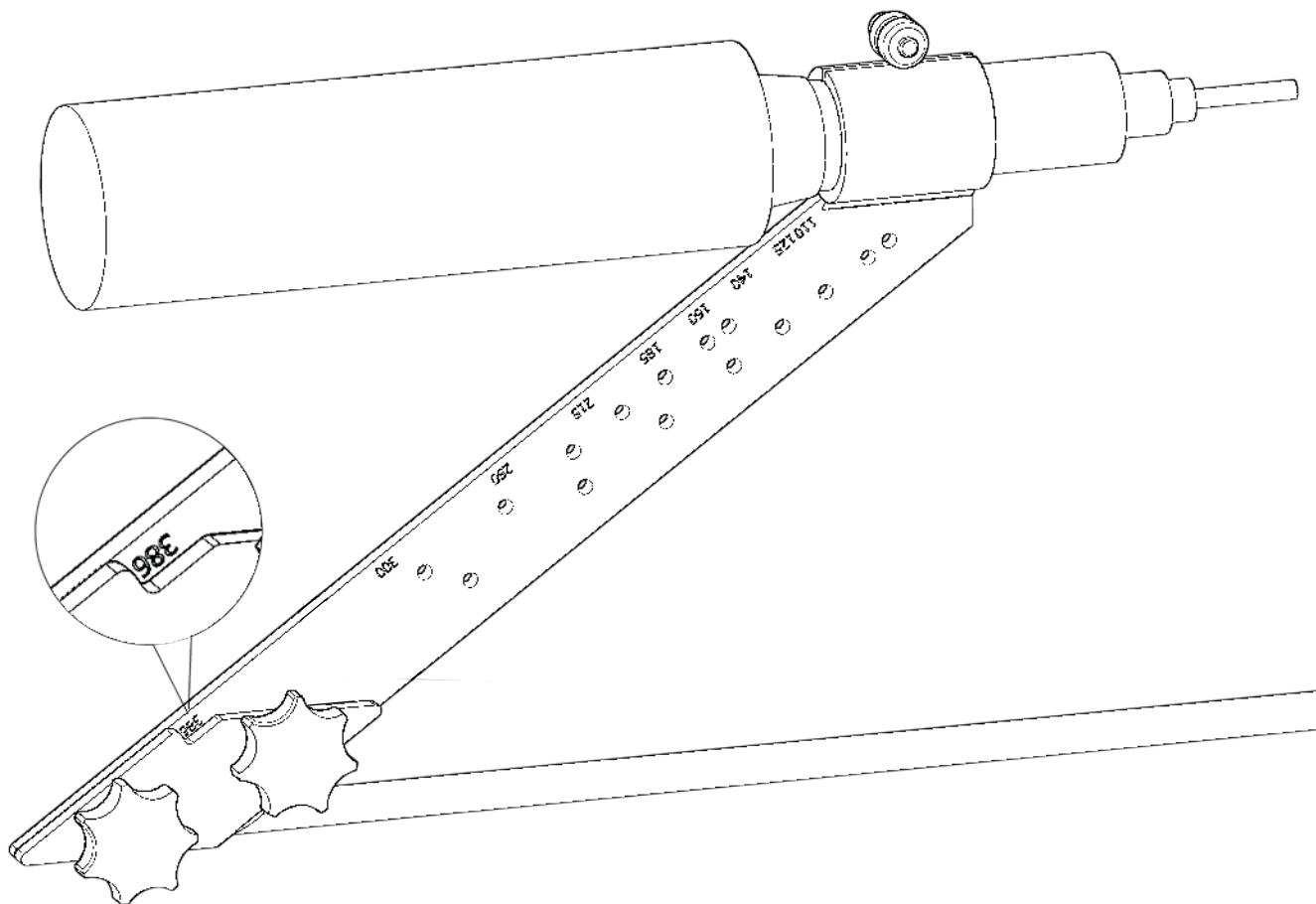
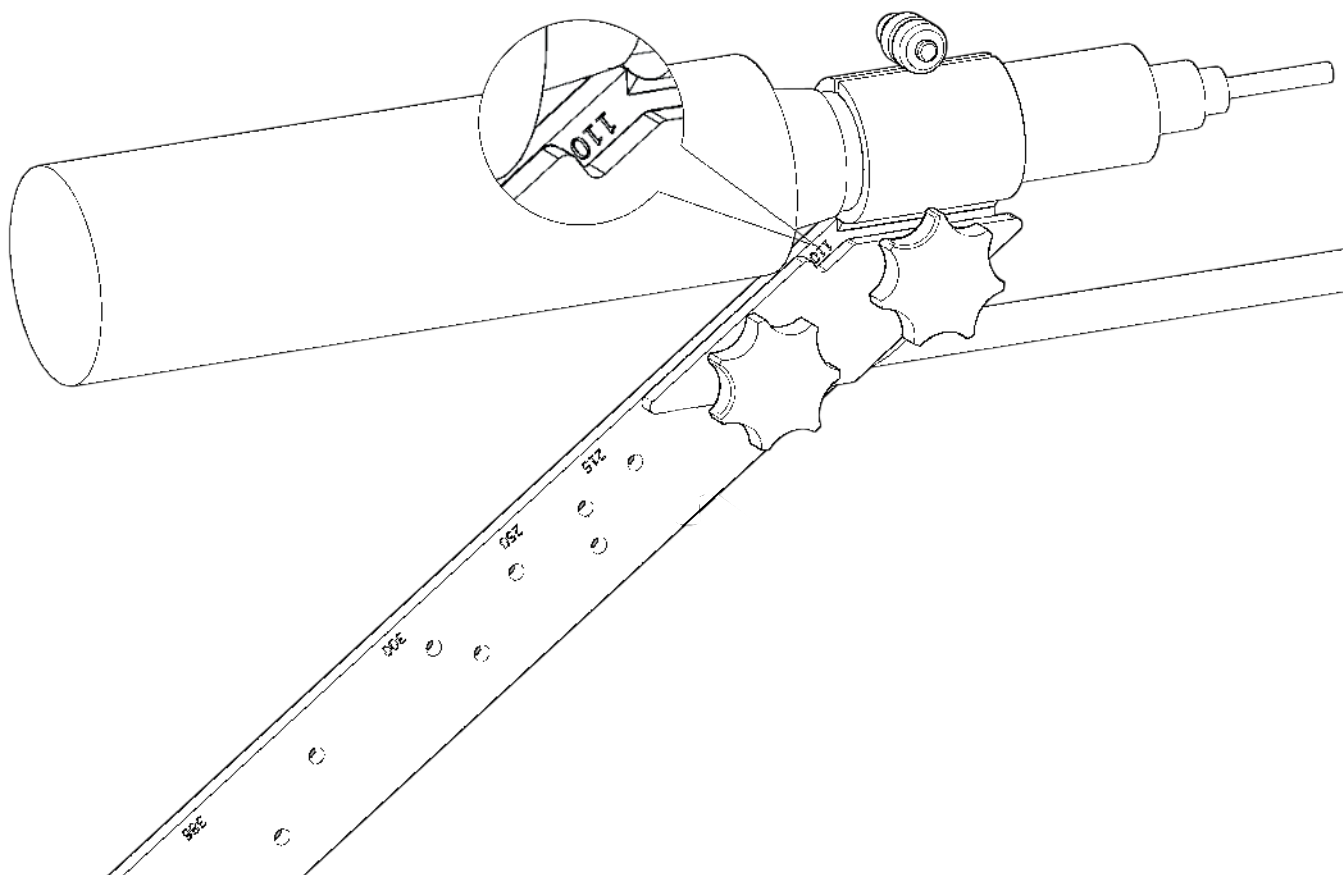
Assembling The Cut Out Tool

MC_0373

Thruster tunnel diameter	Position at cut out tool	Distance A mm	Distance A inches
110mm	110mm	70	2,8
125mm	125mm	74	2,9
140mm	140mm	85	3,4
160mm	160mm	94,5	3,7
185mm	185mm	105	4,1
215mm	215mm	120,5	4,7
250mm	250mm	140	5,5
300m	300mm	167	6,6
386mm	386mm	213	8,4

1. Assemble the cut-out tool, and adjust it to the correct tunnel diameter. After hand-tightening the two threaded handles, tighten the adjustment-screw to get the correct A-distance.

Assembling The Cut Out Tool

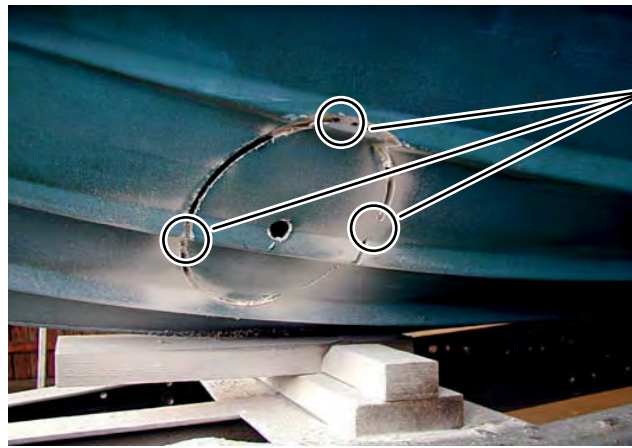


1 - 4



5

IMPORTANT
Leave 3 areas to maintain the stability while cutting for the guide to remain stable until holes are correctly cut/ marked on both sides.



3 Uncut areas to maintain guide hole stability

MG_0429

EN

Cutting the Tunnel Hole

MC_0373

IMPORTANT

Personnel are required to use necessary personal safety equipment to prevent injury in accordance with health and safety directives. Eye and ear protection is required.

1. Find the correct positioning of the tunnel thruster according to thruster installation manual.
2. Drill both $\varnothing 12$ guide holes in correct position.
3. Insert the cut out tool through both $\varnothing 12$ holes.
4. Start the grinder and mark the cutting path by firmly rotating the cut out tool. Ensure to avoid flexing of the rod.
5. Cut out the hole for the tunnel.
6. See thruster installation manual for proceeding the tunnel installation.