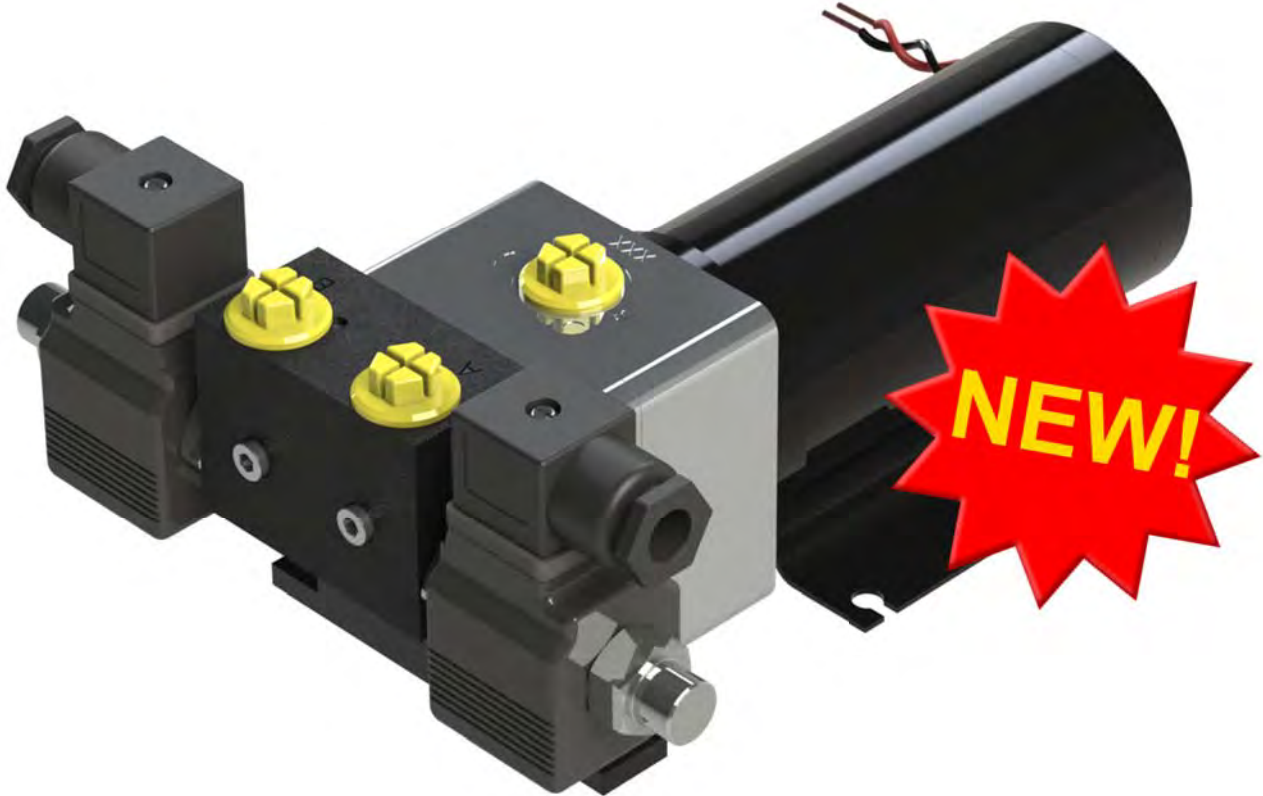


PC+ CONSTANT RUNNING PUMP

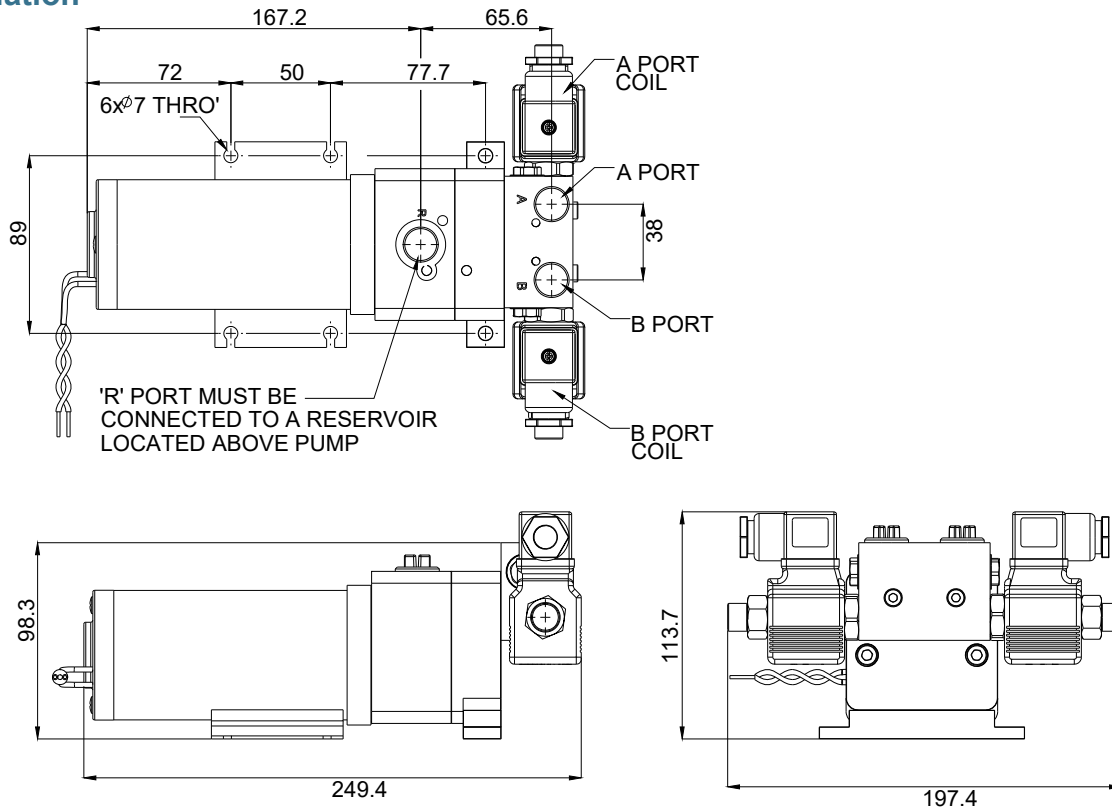


**New to the range of Constant Running Pumps
is the PC+**

**Featuring precision made ground gears driven by our
ultra quiet 100W motor it is suitable for
smaller commercial vessels**

- 1.0 or 1.5 L/min nominal flow
- 12V DC or 24VDC 100W constant running motor
- Solenoid directional control valve
- Zero leakage check valves
- Integral relief valve
- IP67 rating (IP65 solenoid connectors)
- Suitable for cylinders 150cc to 400cc
- Manufactured in the UK

Installation



Technical data

Weight: 4.5 kg

Finish: Motor - black enamel
 Pump: Clear anodised
 Solenoid manifold: Black paint to HTS1006

Ports: G1/4 (BSPP) BS277973

Motor: 12 VDC or 24VDC 100W

Solenoids: 12VDC or 24VDC 24W

Nominal Pump output:
 PC+10 1.0 L/min
 PC+15 1.5 L/min Nominal

Relief Valve Setting: 800 psi (55 Bar)

IP Rating: Pump & Coils: IP67
 Connectors: IP65

Location: Under deck, dry compartment only

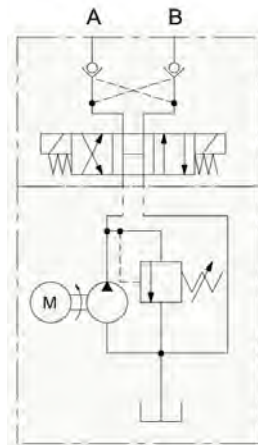
Orientation: Horizontal or vertical (Motor up)

Rotation Red lead to positive

Hoses Suitable for working pressure 40 bar.
 Minimum burst pressure 100 bar.

Fluid ISO VG10 to VG40 Hydraulic mineral fluid meeting ISO 6743-4 HV

Circuit Diagram



Performance Graph

Typical characteristics
 Q8 Auto 15 oil @ 25°C

