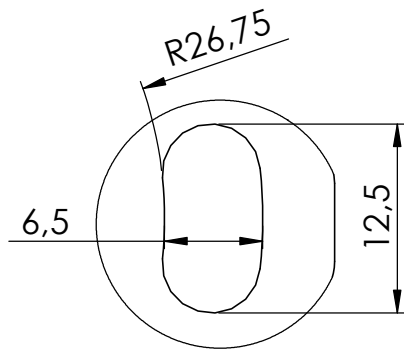
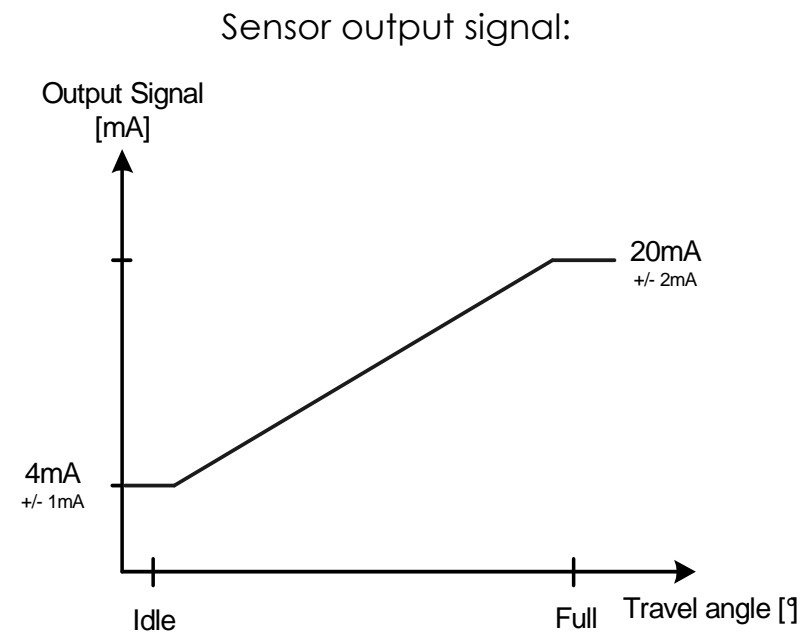
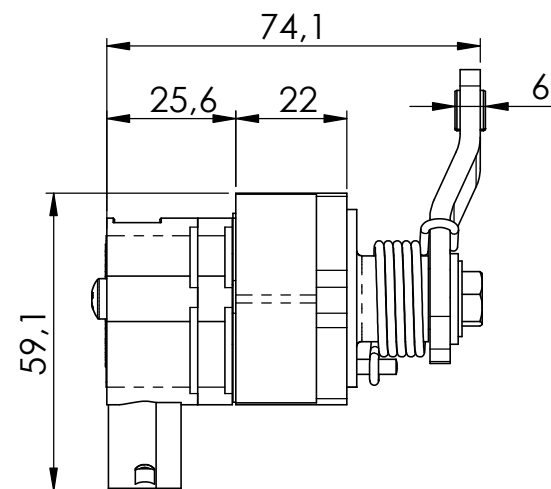


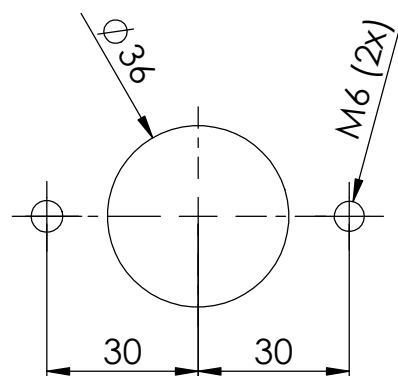
Warning: idle and full throttle positions on the pedal should be reached before sensor end stops!



DETAIL A
SCALE 2 : 1



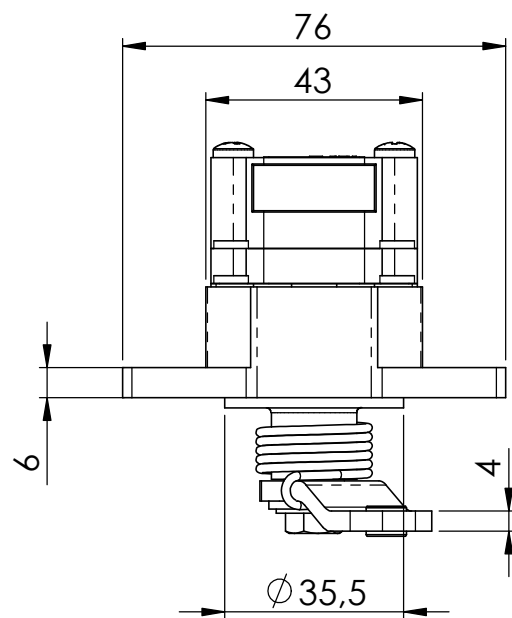
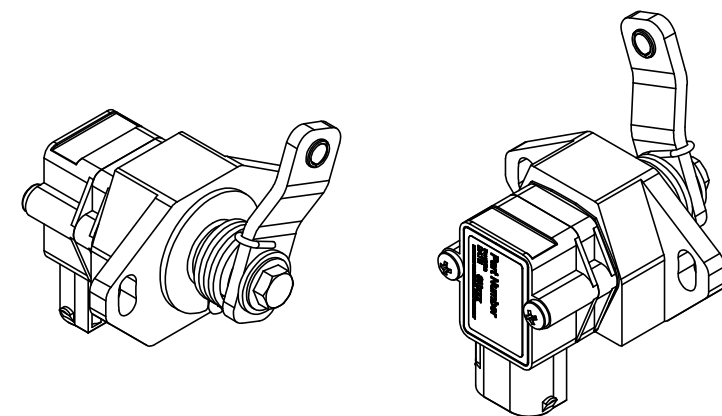
INCLUDED:
WIRE HARNESS INTEGRATED INTERFACE
PARTS N°: **PEHJ 0962 701 100**
(701) = interface type
(100) = length in cm
Not removable



MOUNTING PATTERN

FUNCTION	COLOR
+12/24V Current supply	RED
0V Current GND	BLUE
4mA - 20mA Current signal	BROWN

+12V: Max load 470R
+24V: Max load 1K



!!! WARNING !!!
Connect throttle sensor ground to engine ECU ground terminals only.
DO NOT CONNECT TO CHASSIS GROUND

UNLESS OTHERWISE SPECIFIED: DIMENSIONS ARE IN mm TOLERANCES: ISO 2768 - vL	TITLE:	Throttle Position Sensor Current with interface wire harness		NAME	CREATED DATE
				JST	6/04/2022
				REV. DATE	
				RD	4/05/2022
				SCALE:1:1,5	
				A	
				SHEET 1 OF 1	

MCS
MOBILE CONTROL SYSTEMS SA
This drawing is confidential and remains the sole property of Mobile Control Systems S.A. This document is protected in accordance with the prevailing law.

PART NR:
974 745 M501

REV:
A